



# iFuse Implant System<sup>®</sup>

7.0 mm x 30 mm

**REF** 7030-100

**Rx** only



**LOT** 153373



2018-02



**EC** **REP** MedPass International Limited  
Windsor House, Barnett Way  
Barnwood  
Gloucester GL4 3RT, UK

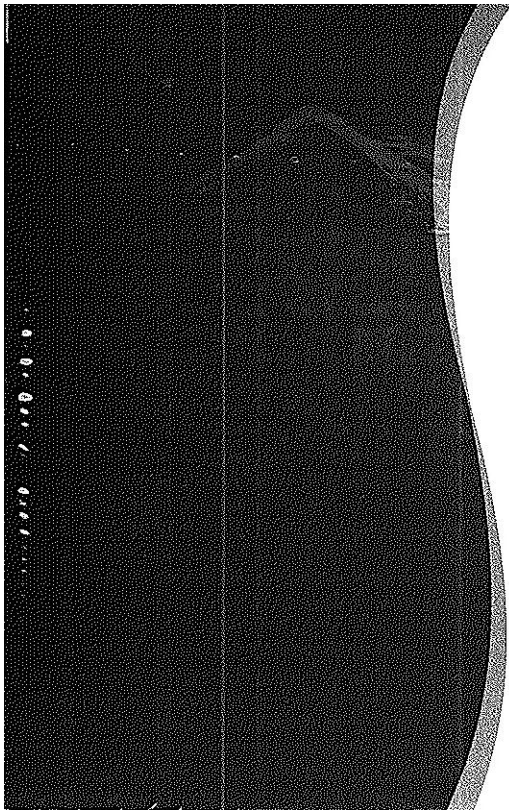
SI-BONE, Inc.  
3055 Olin Avenue, Suite 2200  
San Jose, CA 95128 USA  
[www.si-bone.com](http://www.si-bone.com)

**STERILE** **R** **CE** 0344



Label P/N: 090101237 REV\_REL

SIB-7030-180 Rev. B

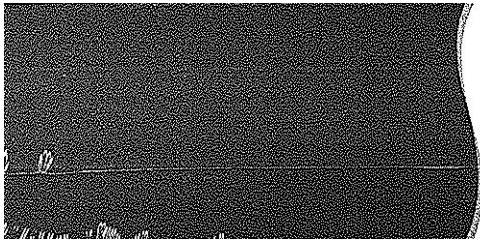


**SI-BONE®** | **iFuse Implant System®**  
Minimally Invasive Sacroiliac Joint Surgery



**SI-BONE** | **iFuse** Implant System,  
Minimally Invasive Sacroiliac Joint Surgery

**REF** 7030-100 **LOT** 153373



**SI-BONE** | **iFuse** Implant System.  
Minimally Invasive Sacroiliac Joint Surgery.

---